



# Caledonian

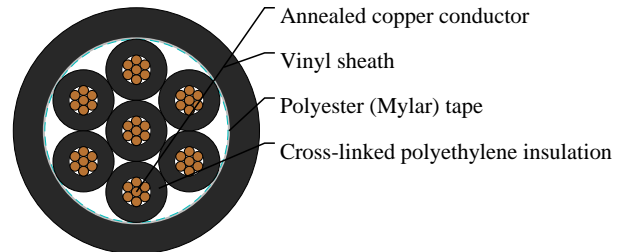
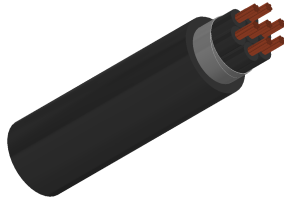
JIS Industrial Cables

www.caledonian-cables.com

marketing@caledonian-cables.com

## JIS C 3401 Cables

CCV 7C1.25



### APPLICATIONS

For supervisory electrical equipment, station control circuits, outdoor, suitable installation in dry or wet cable trenches.

### CABLE CONSTRUCTION

Conductor: Circular or compacted circular stranded annealed copper wires

Separator: A proper separator may be applied to a conductor

Insulation: Cross-linked polyethylene

Filler: Non-hygroscopic material(optional)

Binding tape: Polyester (Mylar) tape (optional)

Sheath: Vinyl, Black color

Name Code:

C: For control C: Cross polythylene V: Vinyl

### COLOUR CODE

Black core with marking numbers

### PHYSICAL AND THERMAL PROPERTIES

Maximum conductor temperature 90°C

Circuit voltage not exceeding 600 volts

Test voltage 2000 volts

### DIMENSION AND PARAMETERS

| No. of Cores | Nominal Cross-sectional Area | No. and Dia. of Wires | Conductor Diameter | Nominal Insulation Thickness | Nominal Sheath Thickness | Approx. Overall Diameter | Approx. Weight | Max. DC Resistance at 20°C |
|--------------|------------------------------|-----------------------|--------------------|------------------------------|--------------------------|--------------------------|----------------|----------------------------|
|              | mm <sup>2</sup>              | no./mm                | mm                 | mm                           | mm                       | mm                       | kg/km          | Ω/km                       |
| 7            | 1.25                         | 7/0.45                | 1.35               | 0.8                          | 1.5                      | 12.5                     | 195            | 16.8                       |